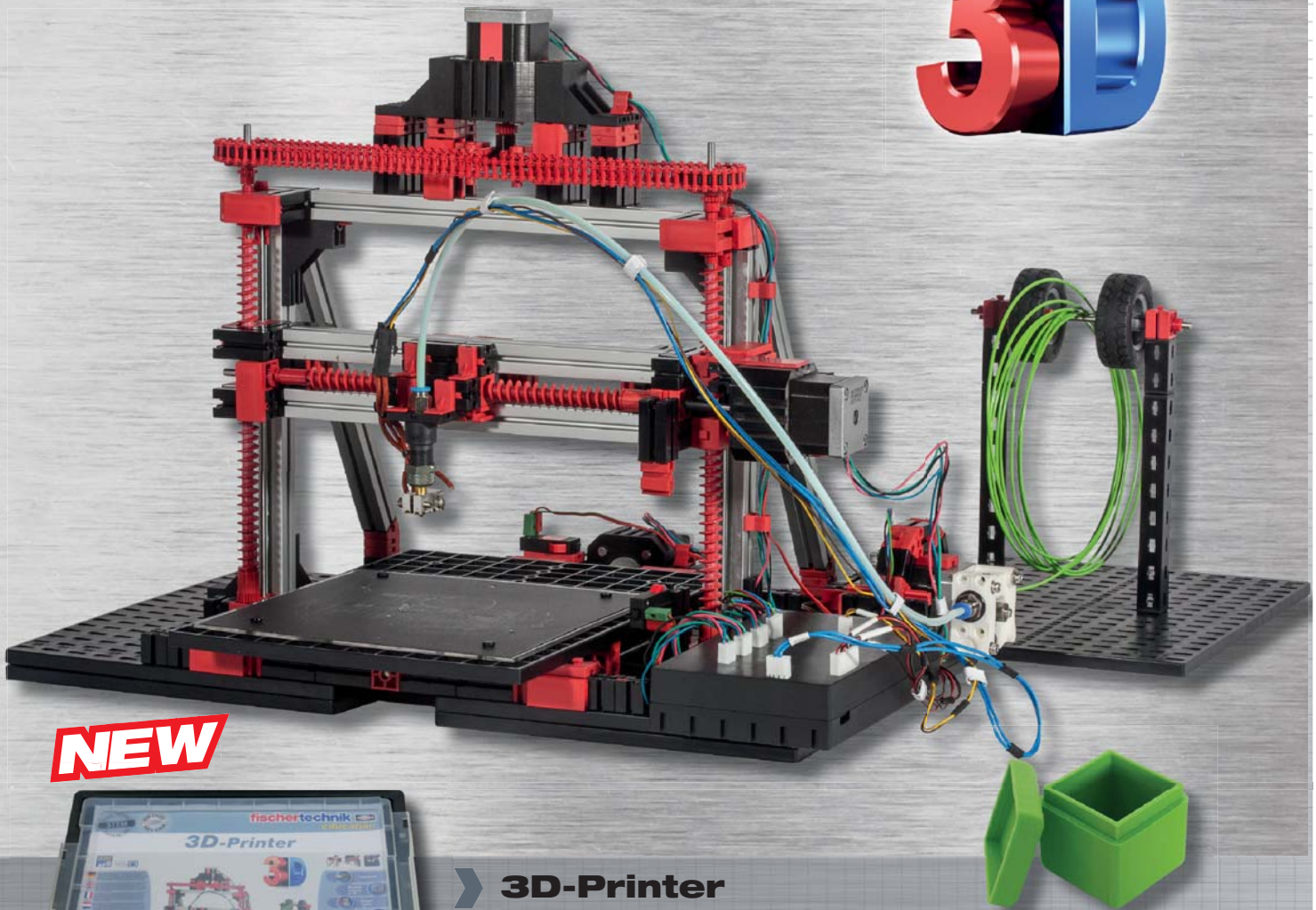




3D



NEW



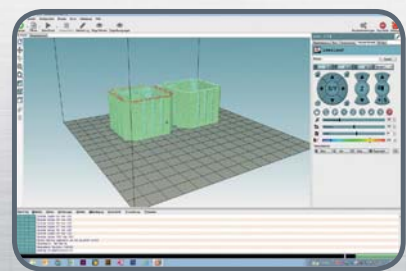
3D-Printer

Components	600	Dimension (mm)	440x315x150
Item No.	536624	Vol (m³)	0,0207
EAN	4048962250312	Weight (g)	6300



Build, Plug & Print! This build-it-yourself kit gives users a fascinating insight into the groundbreaking technology of 3D printing. Print your own parts yourself at any time - so individual, so easy, so flexible - for use in your own home! Either with the supplied printing examples or with your very own print data. The robust 3D printer is easy to build and can be used for 3D printing of different parts. Users acquire basic knowledge about 3D printing and an insight into this revolutionary technology that promises high future potential. PC software for controlling the printer via the USB interface.

- > Incl. Control PCB in fischertechnik housing with Atmel microcontroller, USB interface for PC (USB port Micro B, incl. interface cable), 4 step motor drivers (for x-, y, z-axis and extruder), one power output (MOS-FET) for the extruder nozzle (hot end), connections for 3 limit switches and a temperature sensor, DC port for voltage supply 19V, 5A, dimensions: 150x90x25mm
- > Incl. 3D printer software on CD, with slicer and printer control, specially adapted to fischertechnik 3D printer (Windows 7, 8, 10). Numerous finished printing examples contained as G-codes
- > Incl. 4 high-torque step motors (x-/ y-/ z-axis, extruder), 3 push buttons (as limit switches for x-/ y-/ z-axis), heated nozzle (for 1.75 mm Ø filament) with temperature monitoring, printing bed with removable printing plate
- > Incl. Power unit (AC input 100–240V, DC output 19V, 5A, 50–60Hz)
- > Incl. Top quality filament sample (PLA, 1.75 mm diameter). Quality filament (PLA) in special fischertechnik colors can be ordered separately



Technical data:

- > Printing range: 150x100x80 mm
- > Layer thickness: min. 0.1 mm
- > Filament diameter: 1.75 mm
- > Nozzle diameter: 0.5 mm
- > Material: PLA (polylactide)

Powered by:

German RepRap 